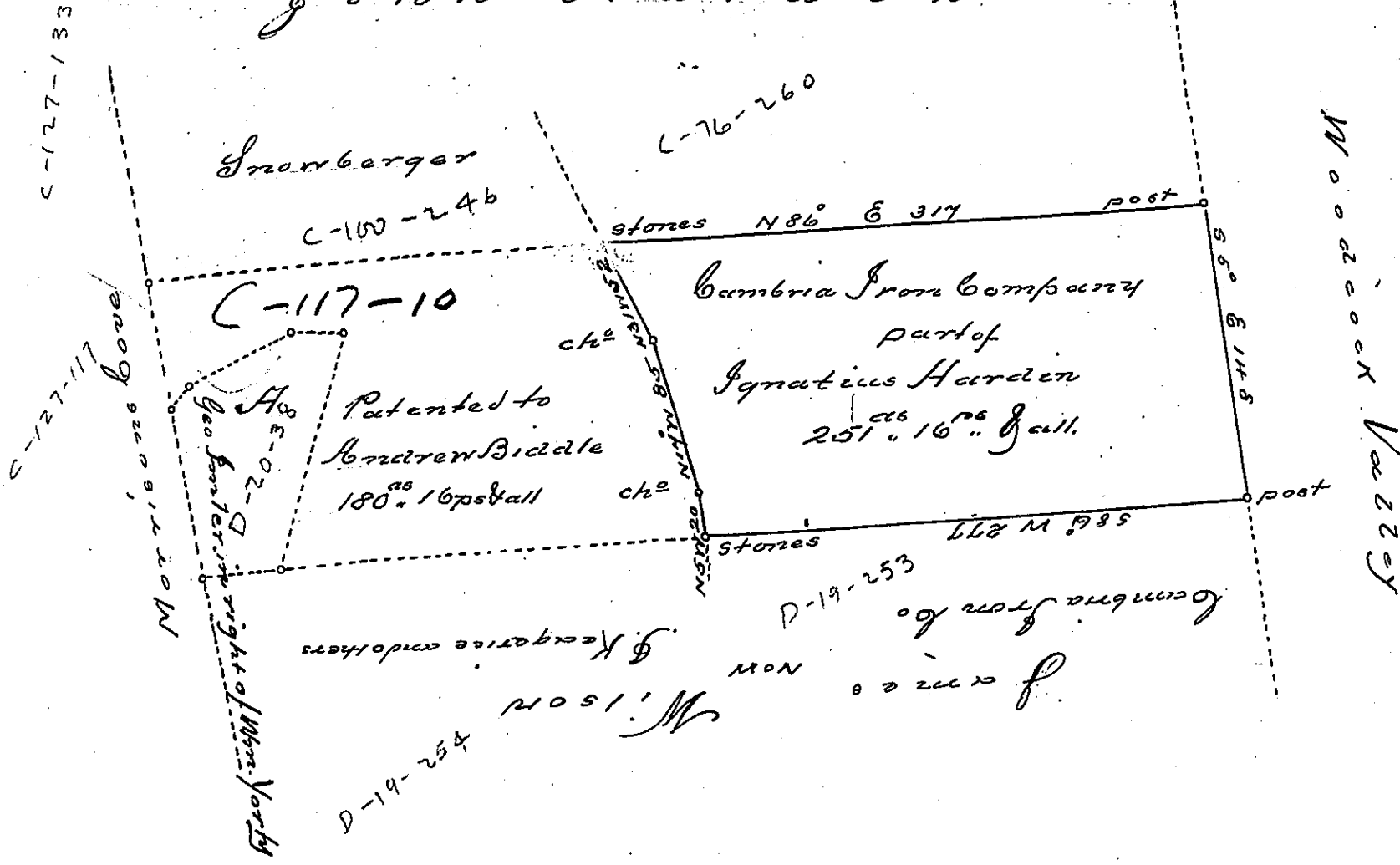


John Hardin



Situate in Hopewell Township Bedford County containing 251
 acres, 16 perches & allowed Surveyed by David Peeler for pat-
 enting to the Cambria Iron Co. the 26 day of March 1869, being a
 part of a larger tract of Land Originally Surveyed on Warranty to
 Ignatius Hardin, dated the 19th day of Sept. A.D. 1794,

Examined and Approved the 21st day of the 2nd Month,
 (Feb) 1873.

Hiram Blackburn C.S.

To Robert B. Death
 D.Y.

IN TESTIMONY that the above is a copy of the original remaining on file in
 the Department of Internal Affairs of Pennsylvania, made
 conformably to an Act of Assembly approved the 16th day of
 February, 1833, I have hereunto set my Hand and caused
 the Seal of said Department to be affixed at Harrisburg,
 this twentythird day of May, 1905,

Isaac R. Brown
 Secretary of Internal Affairs.